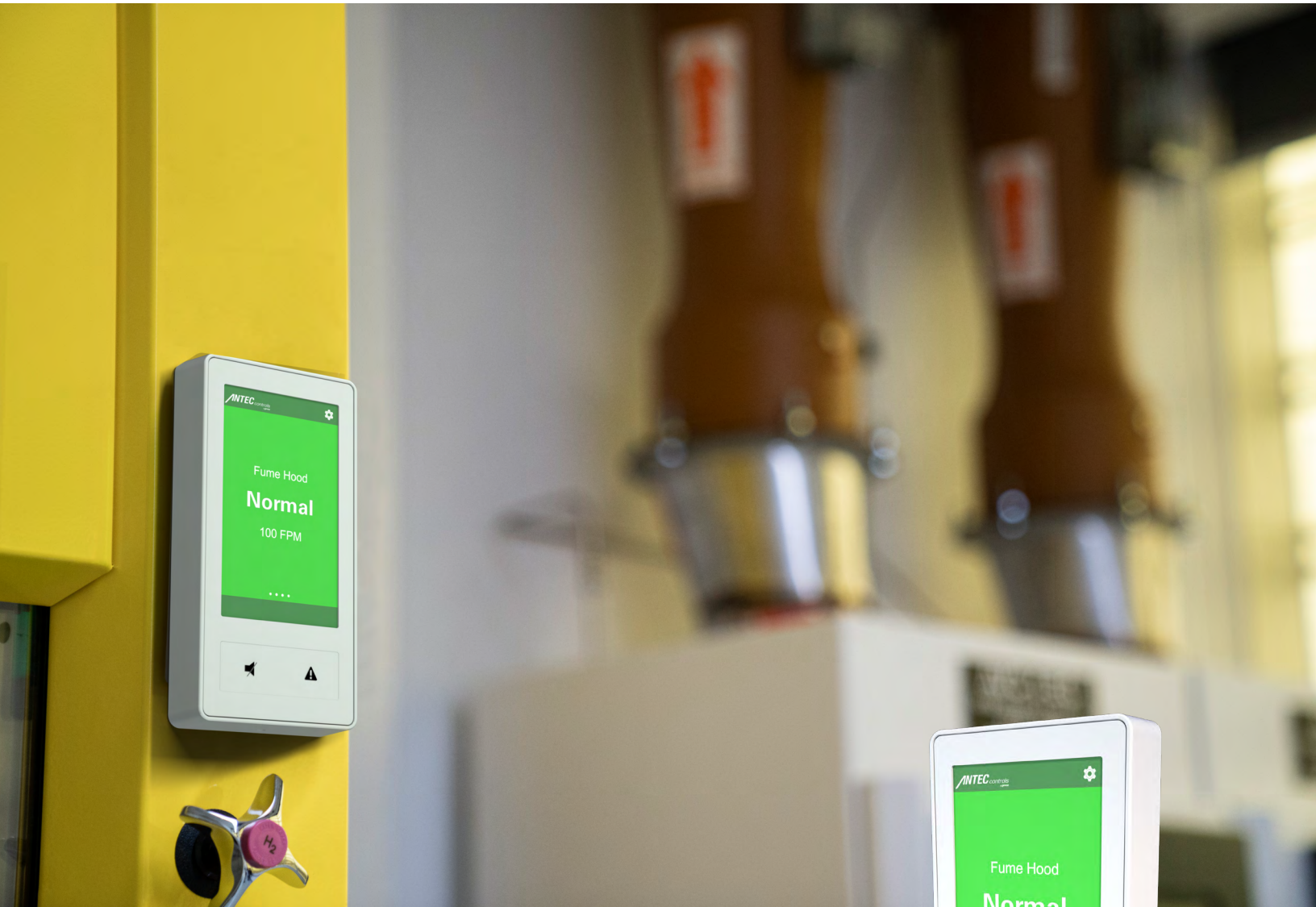


# CAVA

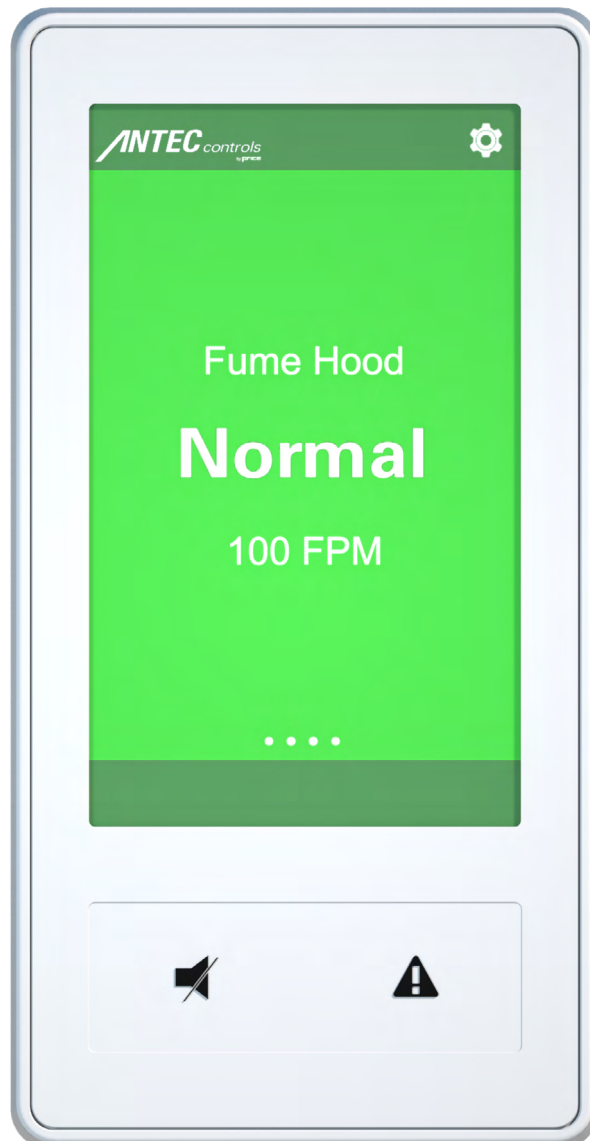
## TOUCHSCREEN FUME HOOD CONTROLLER



**ANTEC** controls  
by price

Cava™ is an exceptionally versatile fume hood controller that precisely monitors and controls fume hood face velocity. Designed specifically to meet the needs of all fume hood types, Cava™ provides assurance that required fume hood face velocity is satisfied and the work environment is safe, while eliminating unnecessary energy usage. Cava™ delivers effective control using Venturi Valves, Venturi FX Valves, or terminal units on fume hoods and biosafety cabinets.

Cava™ displays critical fume hood details through its interface, where users can effortlessly view real-time information and update a variety of display parameters. Cava™ features a high resolution, 4.3"(109.2 mm) capacitive touch-screen display. Fume hood status is clearly indicated through a coloured display with an excellent viewing angle, along with programmable audible alarms ensuring the safety of all users through immediate notification of changes in fume hood status. Cava™ has two physical buttons, including one that allows users to quickly enter emergency mode without having to remove any protective wear.



### FACE VELOCITY CONTROL

Cava™ allows for various fume hood control configurations including sash position sensing, sidewall face velocity sensing, or hybrid sensing that combines both sash position and sidewall sensing. Once installed and commissioned, Cava™ is maintenance-free allowing for reliable fume hood control and monitoring. When controlling a Venturi Valve, the controller measures pressure drop across the valve allowing for duct-system pressure alarms and simplified balancing.



### FEATURES

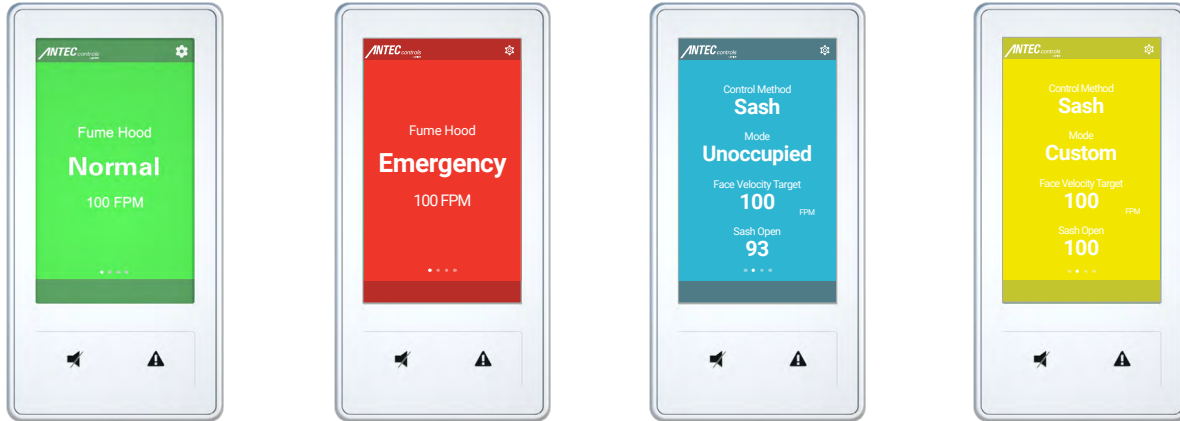
- + Sash position sensing, sidewall face velocity sensing or hybrid sensing control configurations
- + Audible and visual configurable alarms
- + Fast, intuitive start-up and balancing software
- + Works with Venturi Valves, Venturi FX Valves or terminal units
- + Venturi Valve pressure measurement for simplified start up and pressure monitoring
- + Presence sensor available for face velocity setback
- + BACnet MS/TP
- + User defined fume hood modes
- + Commissioning port at every Cava™ that allows for simple fume hood and room level setup

### STANDARDS & CERTIFICATIONS

- + ANSI Z9.5 – American National Standard for Laboratory Ventilation
- + BTL Certified – BACnet Testing Laboratories
- + USP 800 and USP 797 Hazardous Drugs – Handling in Healthcare Settings
- + ASHRAE 170 – Healthcare Ventilation Standard

### SIMPLE FUME HOOD STATUS INDICATION

Cava™ delivers simple and clear room status indication. The illuminated screen uses recognizable colors and a detailed status message to provide a quick visual status.



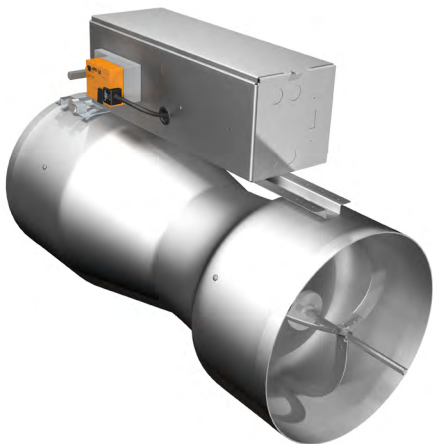
### ROOM INFORMATION NETWORK

The Room Information Network (RIN) allows multiple Cava™ touchscreen fume hood controllers and Pace™ critical space controllers to function together to meet room pressurization, environmental and fume hood control requirements. RIN can support up to 12 total controllers, with any number of them being Cava™ touchscreen fume hood controllers.

Each Cava™ is connected directly into RIN, allowing the user to conveniently monitor the fume hood status while achieving system control at the fume hood level.

### VERSATILE AIRFLOW CONFIGURATION

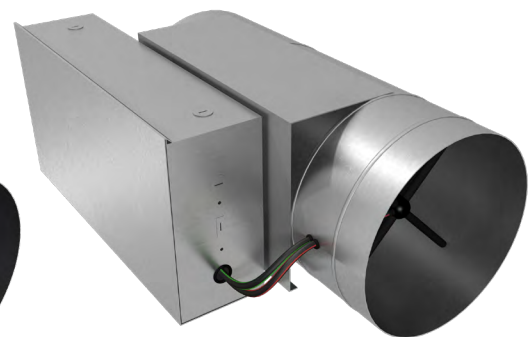
Cava™ meets the control requirements of various airflow devices including Venturi Valves, Venturi FX Valves or terminal units. In addition, RIN allows for any combination of these airflow devices to meet the room requirements.



Venturi Valve



Venturi FX Valve



Terminal Unit

## DIMENSIONAL DATA



## SPECIFICATIONS

See the latest information located in the product submittal available at [www.AntecControls.com](http://www.AntecControls.com)







Product Improvement is a continuing endeavour at Antec Controls by Price. Therefore, specifications are subject to change without notice. Consult your Sales Representative for current specifications or more detailed information. Not all products may be available in all geographic areas. All goods described in this document are warranted as described in the Limited Warranty. The complete product catalog can be viewed online at [AntecControls.com](https://www.AntecControls.com)