

LUME

ROOM PRESSURE MONITORS



LUME

Room Pressure Monitors

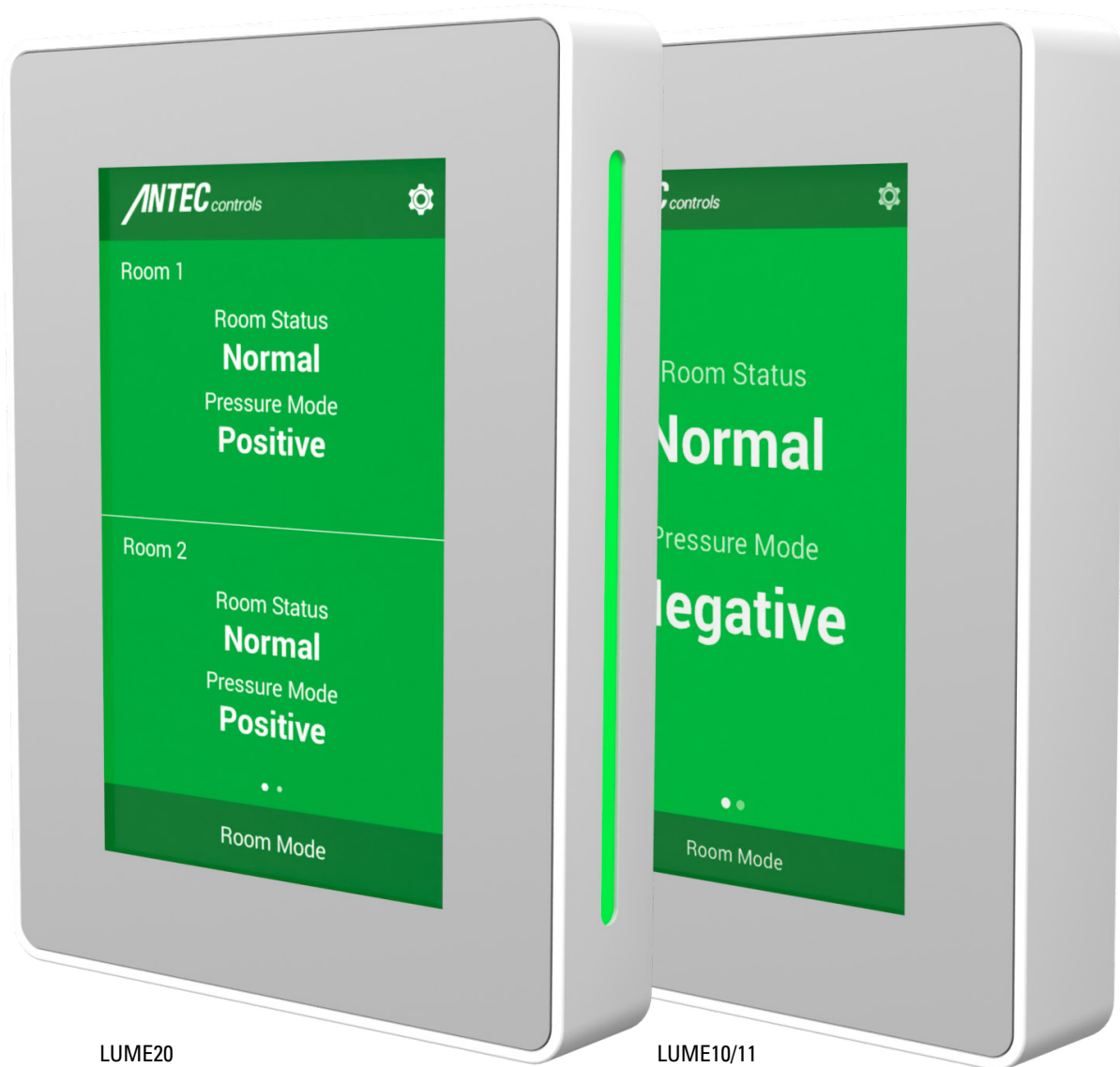
Lume™ room pressure monitors accurately measure and monitor room pressure in places such as Compounding Pharmacies, Isolation Rooms and Operating Rooms, ensuring these environments are kept safe.

With a high-resolution touchscreen display and easy to navigate menus, Lume™ has a simple yet modern user interface. Room status is displayed clearly through the colored screen with audible alarms for additional indication of any changes in room status.

LUME10 provides single room pressure monitoring in combination with Antec Controls SDPT differential pressure sensor to precisely measure room pressure, providing confidence that pressure requirements are met.

LUME11 has the same functionalities as LUME10, with added BACnet capabilities.

LUME20 has the same functionalities as LUME11 with additional features such as LED sidebar lighting for 180 degree viewing, BACnet environment point polling and up to three monitored rooms.



ROOM PRESSURE SENSING

Paired with SDPT differential pressure sensor, Lume™ provides precision pressure measurement in critical spaces. The SDPT is a maintenance-free pressure sensor providing pressure measurement within +/- 0.250 in.w.c. through an analog signal. With minimal drift over time, the SDPT is highly accurate and has proven to have the most durable pressure sensing technology when tested against the competition.



Differential Pressure Sensor

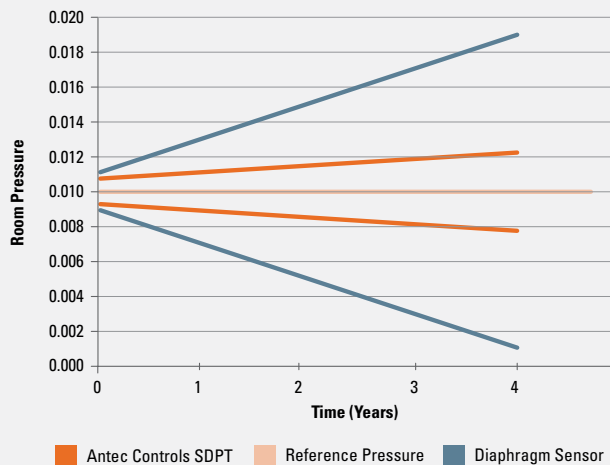
Stainless steel or plastic face plate



Fire-rated pressure tubing

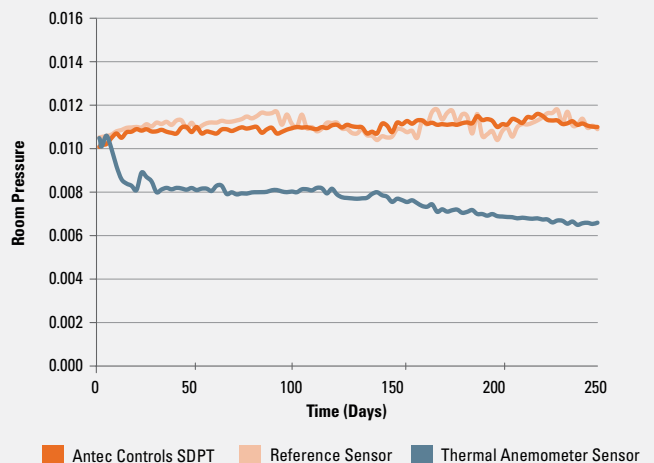
Comparison of Antec Controls sensor to diaphragm sensor technology.

Comparison of published accuracies.



Comparison of Antec Controls sensor to thermal anemometer sensor technology.

Effects of a lint and dust saturated environment.



ROOM STATUS INDICATION

The illuminated screen on Lume™ provides clear room status indication. With two configurable room modes, users have the option to change the screen color and room mode name to best suit their needs.

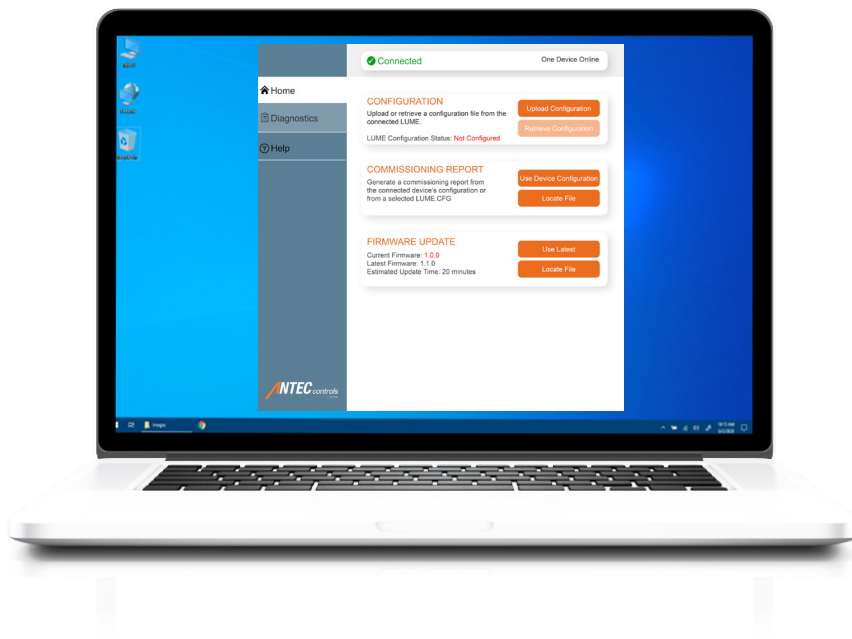


Configurable Room Mode Options

Alarm & Caution

LUME ASSISTANT

Lume™ Assistant is a desktop software application that supports Lume™ commissioning. It is designed to retrieve and upload configurations, and copy or paste these to other devices in the room. Through Lume™ Assistant, users can generate commissioning reports and view device diagnostics.



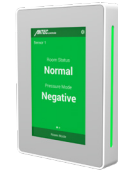
FEATURES



LUME10



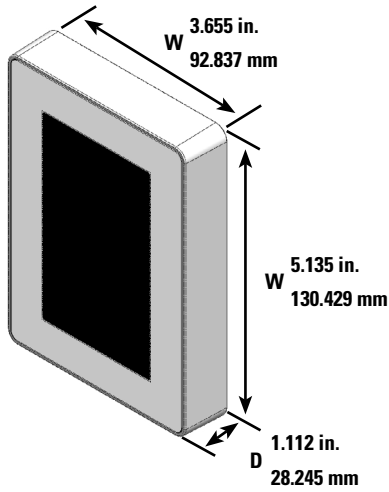
LUME11



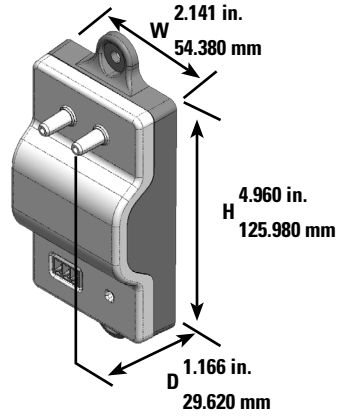
LUME20

Indication	Visual Alarms	Yes	Yes	Yes
	Sideview Indication	No	No	Yes
	Audible Alarms	Yes	Yes	Yes
	Alarm Delays	Yes	Yes	Yes
Display	Size	4.3"	4.3"	4.3"
Power	Input (VAC)	24	24	24
	Consumption (VA) *Includes sensor	19	19	25
Room Pressure Sensors	Sensor	SDPT	SDPT	SDPT
	Pressure Range Accuracy	+/- 0.250 in.w.c 3% of reading	+/- 0.250 in.w.c 3% of reading	+/- 0.250 in.w.c 3% of reading
Configuration	Third Party Option (Analog)	Yes	Yes	Yes
	Monitored Rooms	1	1	1-3
	Room Modes	2	2	2-4
Communications	Native BACnet MS/TP	No	Yes	Yes
	BACnet MS/TP Environment Point Polling	No	No	Yes
	Sensor Information Network (SIN)	No	No	No
Outputs	Analog	1	1	1
	Binary	2	2	2
Inputs	Universal	4	4	4
Accessories	Room Mode Keyswitch	Yes	Yes	Yes
	Door Contact Switch (DCS)	Yes	Yes	Yes

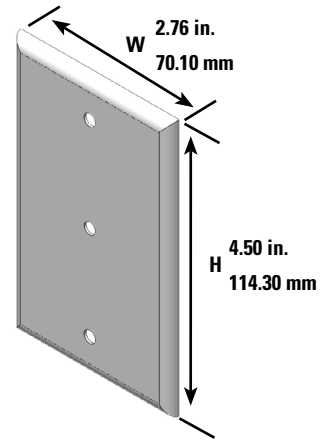
DIMENSIONAL DATA



Lume™ Room
Pressure Monitor



Differential Pressure
Sensor (SDPT)



Face Plate

SPECIFICATIONS

See the latest information located in the product submittal available at www.AntecControls.com



Product Improvement is a continuing endeavour at Antec Controls by Price. Therefore, specifications are subject to change without notice. Consult your Sales Representative for current specifications or more detailed information. Not all products may be available in all geographic areas. All goods described in this document are warranted as described in the Limited Warranty. The complete product catalog can be viewed online at [AntecControls.com](https://www.AntecControls.com)