



Elevator Air Purification System

# EU-100X



## Installation, Operating and Maintenance Guide

Congratulations on selecting the most advanced  
Elevator Air Purification System!

SecureAire's Patented ACTIVE Particle Control™  
Technology removes airborne contaminants while  
INACTIVATING™ (killing) viable airborne pathogens  
including bacteria, viruses and mold.

**Air  
Purification  
for a Safe,  
Healthy,  
and Clean  
Environment™**

## Legal Notices

**The information contained in this document is subject to change without notice.**

This document contains proprietary information that is protected by copyright. All rights are reserved. No part of this document may be photocopied, reproduced, or translated to another language without the prior written consent of SecureAire Technologies, LLC.

SecureAire Technologies, LLC  
1968 Bayshore Blvd  
Dunedin, Florida 34698  
www.secureaire.com  
Phone: 813-300-6077

## Technical Support

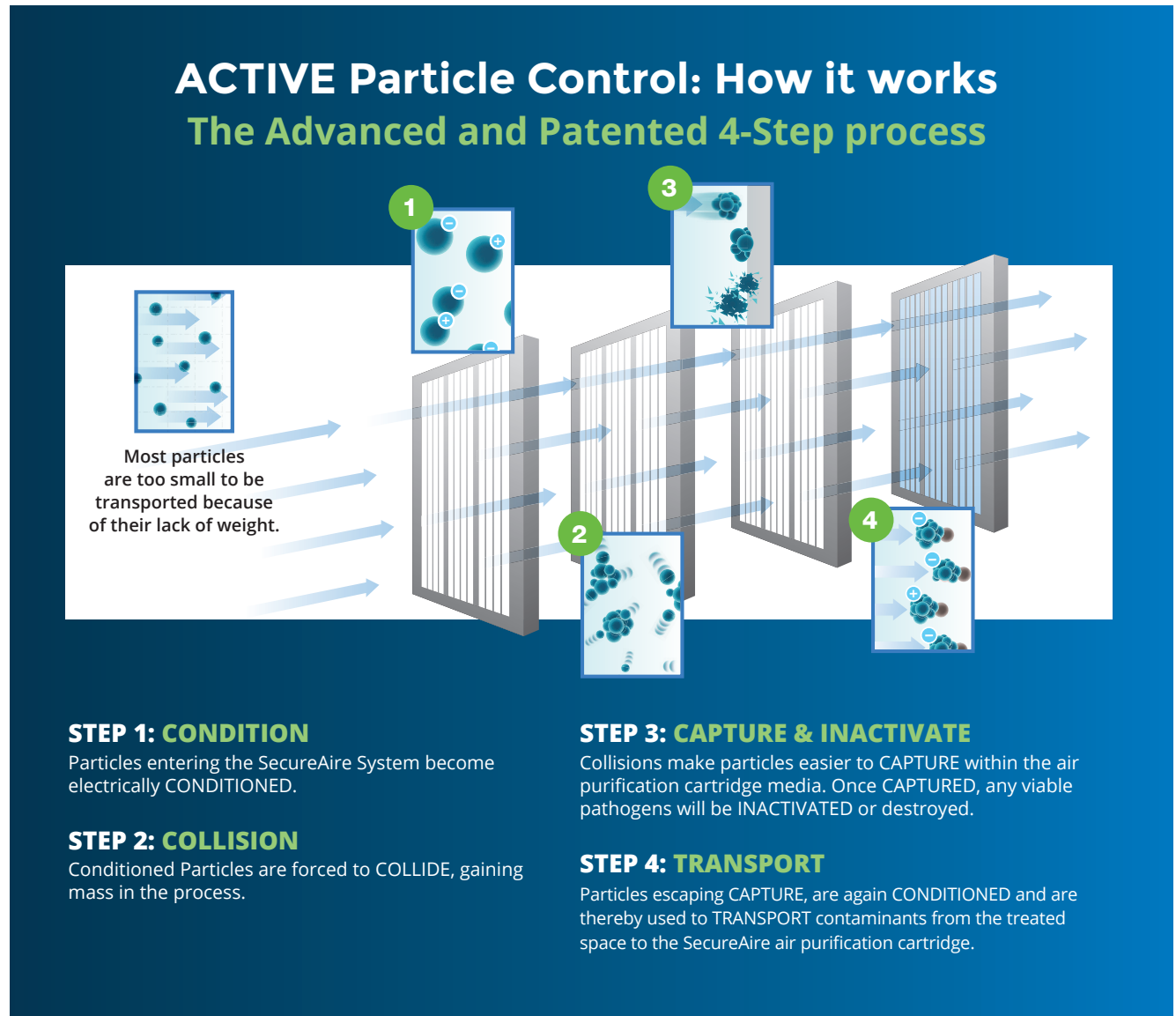
Please contact us at 813-300-6077 with any questions.

## Printing History

This manual was first printed in July 2020. The edition number will change when a new edition is printed. Minor changes may be made at reprint without changing the edition number. The part number will change when extensive changes are made.

## Advanced Technology Overview

The EU-100X is a State-of-the-Art Elevator Air Purification System that utilizes SecureAire's ACTIVE Particle Control Technology (APC). The patented process is described in the following diagram:



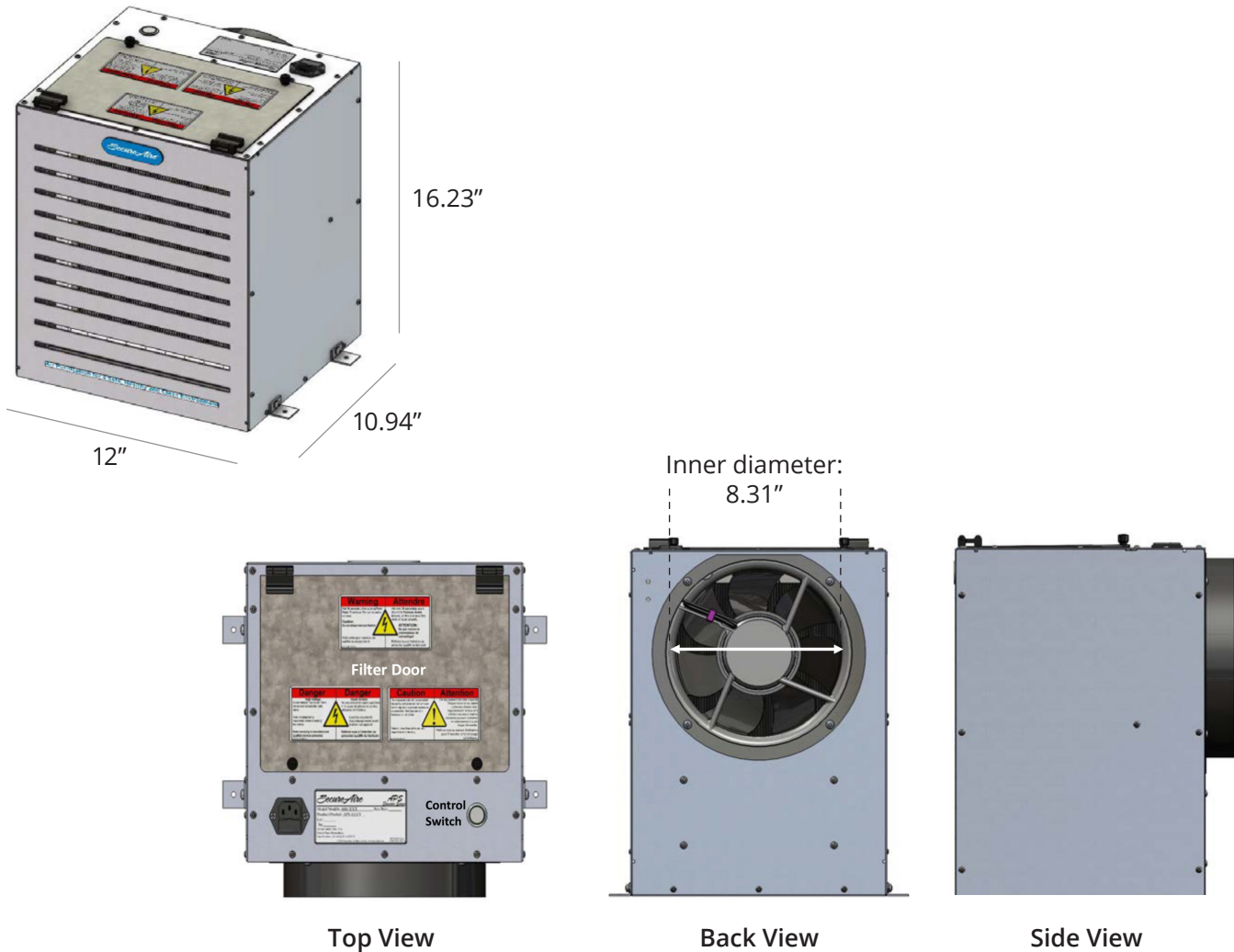
## System Overview

The System consists of the following: System cabinet, System Electronics, SecureAire Replaceable Filter Cartridge and the fan. The system has been tested to deliver the following performance metrics:

1. A very high particle collection efficiency rate (MERV 15).
2. ACS **INACTIVATE™** Technology kills up to 99% of captured biological pathogens.

Further information on SecureAire's Technologies can be found at [www.secureaire.com](http://www.secureaire.com).

## System Dimensions



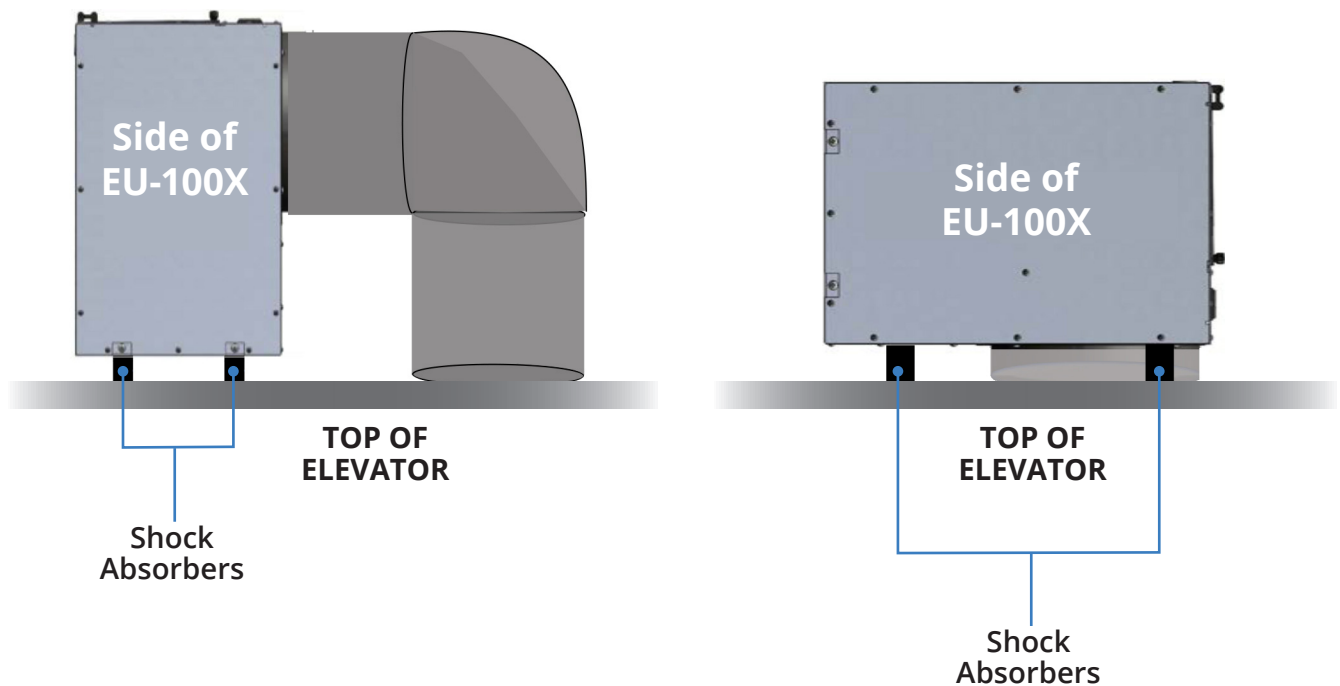
# Installing an EU-100X System

## Unpacking:

The EU-100X unit comes complete and is pre-tested at the factory. Once uncrated, the unit is ready for installation.

## Installation:

Installing an EU-100X requires placing the system above the elevator, mounting the system in the preferred configuration (see below) with appropriate bracing, shock absorbers and running the required ductwork to the fan plenum. A qualified HVAC installer and a certified or licensed electrician should install the unit.



# Installing an EU-100X System



## The Installation consists of three following steps:

**STEP 1:** Plan the System layout. An appropriate location should be chosen for the EU-100X. It should be placed above the elevator and secured with appropriate brackets and shock absorbing washers. Once the unit is secured, you can move to Step 2.

**STEP 2:** Electrical Connection: Connect the unit into an appropriate 10 - amp, 120 VAC electrical outlet/ circuit. Insert power cord into the female connector within the EU-100X



### IMPORTANT NOTES:

1. A licensed electrician should provide an individual properly grounded branch electrical circuit with a rating of 120 VAC, 60 Hz at 10 amps.
2. Wiring must be performed with 2 wires and a ground wire. It is rated for 75°C (176°F).

**WARNING**  
**FOR PERSONAL SAFETY:**  
Remove branch circuit fuse or open circuit breaker before beginning installation. Do not use an extension cord or adapter plug with this device.

### Grounding Instructions - Cable Direct

This device must be connected to grounded metal, a permanent wiring system, or an equipment ground conductor. It must be run with the circuit conductors and be connected to the equipment ground terminal. Use electrical conduit where required.

**WARNING**  
The improper connection of the equipment grounding conductor can result in a risk of electric shock. Check with a qualified electrician or service representative if you are in doubt that the appliance is properly grounded.

**STEP 3:** Test the Unit. After verifying correct connectivity and checking for tight hardware, install the branch circuit fuse or turn on the circuit breaker. Press the Power Button to select one of the three desired fan speeds: Low, Medium or High. Turning the system on will produce a green indicator light that will go out after 10 seconds. To turn the system off, press and hold the Power Button for 3 seconds.

**Your installation of the SecureAir EU-100X unit is now complete!**

**IMPORTANT NOTE:** Care should be taken to make sure that no metal, including metal shavings or screws, gets placed or lodged in the EU-100X as this can create an electrical short in the system.

## Maintenance

The EU-100X System was designed for easy installation and maintenance. Once the EU-100X System has been installed and is properly connected, the system is ready to run.

### Filter Cartridge Change Outs:

Filter Media change outs are made easy due to the EU's Systems design. An access door allows for quick filter changes. Simply turn off the power to the unit, open the filter door, remove the used filters and replace it with a new one. Turn the system power back on and your filter change is complete.

*Replacement Filter Cartridges can be purchase through your local SecureAire Dealer.*

### Maintenance:

While no further maintenance is specifically required, it is advised to occasionally check for dirt buildup on the units. Should buildup occur, it can be blown off with an air gun or wiped off with a soft paintbrush while units are not energized.



## WARNING

### **Electric Shock Hazard! Can cause personal injury!**

**Do not, under any circumstances use an electrical extension cord other than what is provided with the unit. Before servicing this unit, always make sure that the unit is unplugged from any outlet and do not perform any servicing other than that contained in this Guide.**

## Standards and Approvals

The SecureAire Elevator Air Purification System has been tested and verified to meet or exceed the following:

- UL 867 Electrical Standard
- CSA C22.2 No. 187-09 Electrical Standard

## Technical Support

Please contact your local representative or SecureAire at 813-300-6077 with any questions.

## SecureAire Product Warranty

**Limited Warranty.** SecureAire products are expressly warranted for normal product use for twelve (12) months from the date of shipment (as shown on proper purchase paperwork) or manufactured date code (if purchase paperwork is unavailable, the "Warranty Period") against failure due to defects in workmanship and materials. SecureAire's exclusive obligation under this limited warranty shall be to supply, without charge, a new or like new replacement for any product part that fails due to defect during the Warranty Period. Replacement of a part shall not extend the original product Warranty Period and any replacement part provided under this warranty shall only be subject to the remainder of the original warranty for the product, including the original twelve (12) month Warranty Period. This limited warranty shall not obligate SecureAire for any labor costs associated with replacing product parts.

**Warranty Exclusions.** Filter media is considered a disposable item and is not covered under this limited warranty. SecureAire is not responsible should the product (i) fail to be maintained properly, or (ii) be modified in any fashion whatsoever, or (iii) fail to function properly as a result of misuse, abuse, improper installation, neglect, damage caused by disaster such as fire, flood and lightning, improper electrical current, or (iv) be repaired other than by SecureAire or an Authorized SecureAire Services Representative, or (v) be repaired using parts other than those supplied by SecureAire, or (vi) be used with non-SecureAire filter media, or (vii) be damaged due to acts of war or terrorism. Additionally, this limited warranty shall not apply if purchaser has not paid all invoiced amounts due. SecureAire Products are for installation and operation in the United States and Canada only. Installation and operation of the SecureAire Products outside of the United States and Canada voids all warranties.

**SecureAire Technologies, LLC**

1968 Bayshore Boulevard, Dunedin, FL 34698

813.300.6077 | [www.secureaire.com](http://www.secureaire.com)