

SecureAire APS-1000X SYSTEM

Quick Start and Maintenance Guide



SecureAire

Particle Control Technology for Cleaner Air™

Part Number: S-001

© Copyright 2016 SecureAire, LLC.

Preface

Legal Notices

The information contained in this document is subject to change without notice.

This document contains proprietary information that is protected by copyright. All rights are reserved. No part of this document may be photocopied, reproduced, or translated to another language without the prior written consent of SecureAire Incorporated.

SecureAire Inc.

3675-B Tampa Road

Oldsmar, Florida 34677

www.secureaire.com

Phone: 813-300-6077

Technical Support

Please contact us at 813-300-6077 with any questions.

Printing History

This manual was first printed in October 2016. The edition number will change when a new edition is printed. Minor changes may be made at reprint without changing the edition number. The part number will change when extensive changes are made.

System Overview

The APS-1000X is a State-of-the-Art Portable Air Purification System that utilizes SecureAire's Advanced Collector System Technology (ACS). The System consists of the following: Vertical cabinet, SCM (system control module), replaceable SecureAire filter and the fan. The system has been tested to deliver the following performance metrics:

1. A very high particle collection efficiency rate (MERV 15).
2. ACS **INACTIVATE**[™] Technology kills up to 99% of captured biological pathogens.

Further information on SecureAire's Technologies can be found at www.secureaire.com.

Unpacking and Installing an APS System

Unpacking: The APS-1000X unit comes complete and is pre-tested at the factory. Once uncrated, the unit is ready to run.

Startup

1. Place the APS-1000X in an appropriate location.
2. Plug the APS-1000X into a 110-V receptacle.
3. Turn the unit on via the GREEN ON/OFF power switch. The system will run through its self-diagnostics and calibration. The ON/OFF switch will illuminate indicating that the APS-1000X is running properly.
4. Set the Variable Fan Speed Controller for the desired fan speed. Note that the higher the fan speed, the faster the cleanup rate.

The APS-1000X Unit set up is now complete!

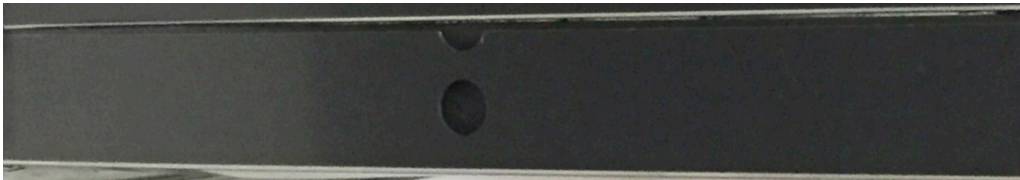
Maintenance

Media Change Outs: Filter Media change outs are made easy due to the APS-1000X Systems design. An access door allows for quick filter changes. The following steps explain how to change the filter:

1. Turn off the power and unplug the APS-1000X unit.
2. Unscrew the secured filter door as shown below in Figure 2.



3. Carefully remove the Filter and Filter Housing from the APS-1000X, using the pull-out notch as shown in Figure 3.



4. Remove the dirty filter from the housing, and replace it with a SecureAire Replacement Filter, Part Number APS-1000X-FR.
5. Insert the housing with new replacement filter back into the APS 1000X and secure the filter door.
6. Turn the system power back on.

The filter change is now complete!

Additional Maintenance

While no further maintenance is specifically required, it is advised to occasionally check for dirt buildup on the units. If dirt buildup does occur it can simply be blown off with an air gun or wiped off with a soft paintbrush while units are not powered.

Warning – Risk of Electric Shock!

To reduce the risk of electric shock, do not perform any servicing other than that contained in this Guide.

Technical Support

Please contact your local representative or SecureAire at 813-300-6077 with any questions.